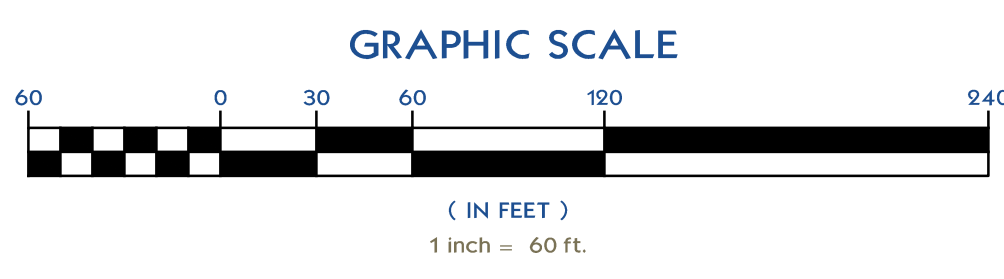
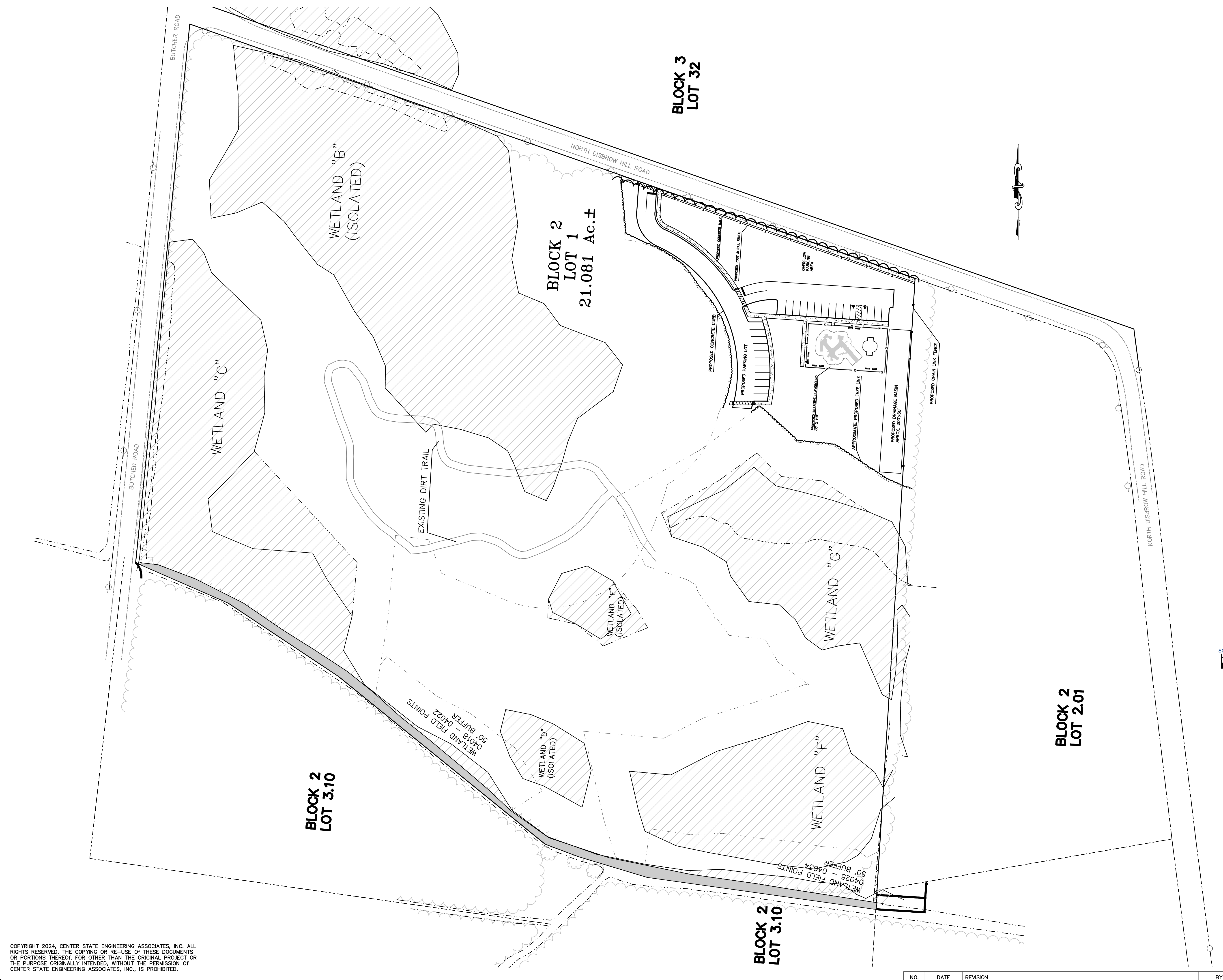


Copyright: Center State Engineering Associates, Inc. 2024. Dwg. Name: 04-025-04034-Monroe-Township-Inclusive-Playground-Concept-Plan.dwg. Application: North Disbrow Hill Road Concept Plan Concept. Revised for North Disbrow Hill Road. Printed: Jan 28, 2025 - 8:00am



CENTER STATE ENGINEERING

481 SpotsWood Englishtown Road, Monroe Township, New Jersey 08831
 Phone: 732.605.9440 www.CenterStateEngineering.com Fax: 732.605.9444

PROJECT:
 NORTH DISBROW HILL ROAD
 INCLUSIVE PLAYGROUND

DRAWN BY: RED	LOCATION: TOWNSHIP OF MONROE, MIDDLESEX COUNTY, NJ	SCALE: AS NOTED
DESIGNED BY: RED	LOT AND BLOCK: LOT: 1 BLOCK: 2	ISSUE DATE: 11/08/2025
CHECKED BY:	TITLE: CONCEPT PLAN	PROJECT NO.:
APPROVED BY:		
PROJECT MANAGER:		

PRELIMINARY
 Not for Construction

SHEET NO. #
 Of #

COPYRIGHT 2024, CENTER STATE ENGINEERING ASSOCIATES, INC. ALL RIGHTS RESERVED. THE COPYING OR RE-USE OF THESE DOCUMENTS OR PORTIONS THEREOF, FOR OTHER THAN THE ORIGINAL PROJECT OR THE PURPOSE ORIGINALLY INTENDED, WITHOUT THE PERMISSION OF CENTER STATE ENGINEERING ASSOCIATES, INC., IS PROHIBITED.

NO.	DATE	REVISION	BY