

Site Information

Prospect Plains Road (CR 614) (Applegarth Road to Municipal Border with Cranbury)

The section of Prospect Plains Road that is subject of this report is a two (2) lane, undivided County roadway with a variable pavement width of approximately 34 feet to 50 feet. Sidewalk is found on the southern side of the roadway. The posted speed limit along this 2300-foot roadway section is 45 MPH. The roadway is signalized at its intersection with Applegarth Road and its intersection with Stonaker Road and Gavett Drive. Access to the westerly entrance of the Rossmoor Adult Community via Stonaker Drive and access to the K. Hovnanian Four Season Adult Community is found on Prospect Plains Road.

Although signalized, the existing roadway geometry at the intersection of Applegarth Road and Prospect Plains Road makes tractor trailer turning motions difficult without opposite lane encroachment.

Cranbury Half Acre Road (Applegarth Road to Municipal Border with Cranbury)

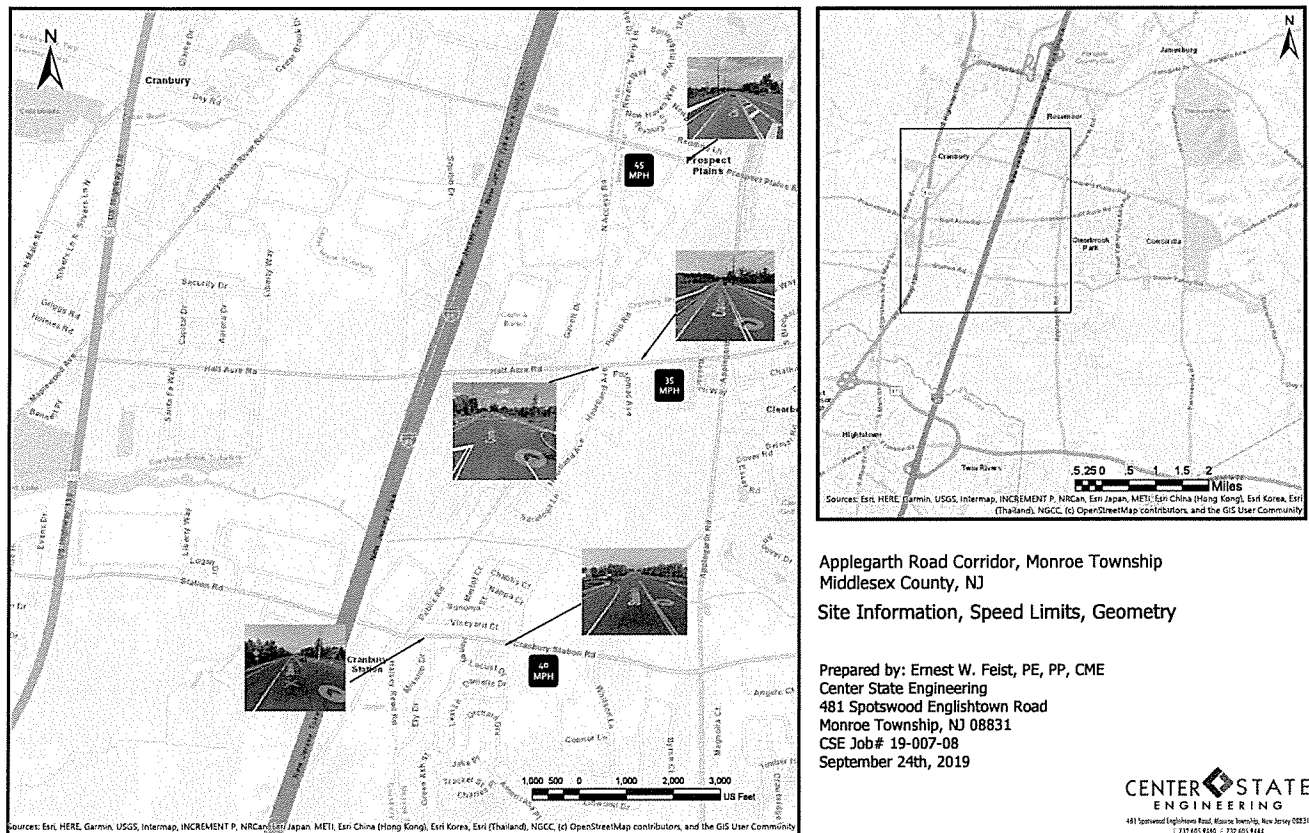
The section of Cranbury Half Acre Road that is subject of this report is a two (2) lane, undivided Municipal roadway with a variable pavement width of approximately 30 feet to 34 feet. Curb and sidewalk are found on both sides of the roadway with the exception of a small section of missing curb and sidewalk on the south side. There are two (2) mid-block pedestrian crosswalks, one of which provides access to a Township Recreational facility. The roadway is signalized at its

intersection with Applegarth Road. The posted speed limit along this 2200-foot roadway section is 35 MPH. Access to the Orchards at Monroe residential subdivision is located on the south side of Cranbury Half Acre Road and the entrance to Patriots Park (children's park) is on the north side.

Cranbury Station Road (CR 615) (Applegarth Road to Municipal Border with Cranbury)

The section of Cranbury Station Road that is subject of this report is a two (2) lane, undivided County roadway with a variable pavement width of approximately 38 feet to 50 feet. Curb and sidewalk are found on the south side of the roadway. The north side of the roadway has intermittent sections of curb and sidewalk. The roadway is signalized at its intersection with Applegarth Road. The posted speed limit along this 4800-foot roadway section is 40. Access to the Renaissance at Cranbury Crossing Adult Community, Stratford at Monroe and the Crossing at Monroe residential subdivisions are found on Cranbury Station Road.

A reduced size map depicting this data is shown below (full size map attached):



Alternate Routes

Cranbury Half Acre Road, and Cranbury Station Road (CR 615) are east-west connector roads between Applegarth Road and State Highway 130, providing access to warehouse and distribution facilities located in Cranbury Township. For tractor trailers coming from the south (State Highway 33) seeking to travel between Applegarth Road and State Highway 130 to these facilities, the alternate and preferred route would be State Highway 33 to State Highway 133 and then to State Highway 130. For trucks

coming from the north, Forsgate Drive to State Highway 32 to the Turnpike provides a convenient alternate route.

Access to the warehouse and distribution facilities located on Cranbury Half Acre Road, and Cranbury Station Road (CR 615) in Cranbury Township is via State Highway 130 from the north and south.

Prospect Plains Road (CR 614) is an east-west connector road between Applegarth Road (CR 619) and Cranbury South River Road (CR 535), providing access to warehouse and distribution facilities located in Cranbury Township. For trucks coming from the south (State Highway 33) seeking to travel between Applegarth Road and Cranbury South River Road (CR 535), the alternate and preferred route would be State Highway 33 to State Highway 133 to State Highway 130. For trucks coming from the north, Forsgate Drive to State Highway 32 to the Turnpike provides a convenient alternate route.

Access to the warehouse and distribution facilities located on Prospect Plains Road in Cranbury Township is via Cranbury South River Road (CR 535) from the north and south.

Governing Body Support

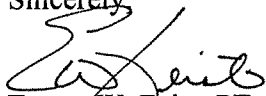
The Monroe Township Municipal Council has agendized the adoption of an Ordinance in support of the proposed CMV restriction for October 7th, 2019.

Engineers Certification

It is my recommendation, after reviewing the current conditions and data presented above, that a 8-ton weight restriction for Commercial Motor Vehicles for Prospect Plains Road (CR614), Cranbury Half Acre Road, and Station Road (CR 615), between Applegarth Road and the municipal border with Cranbury Township, is in the interest of safety and the expeditious movement of traffic.

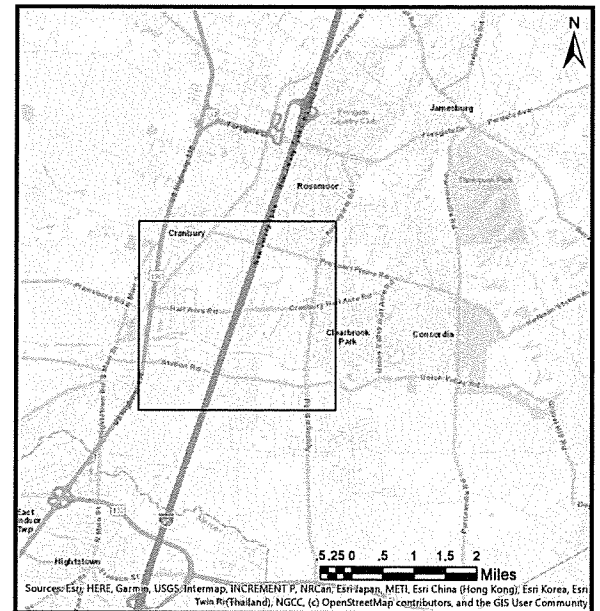
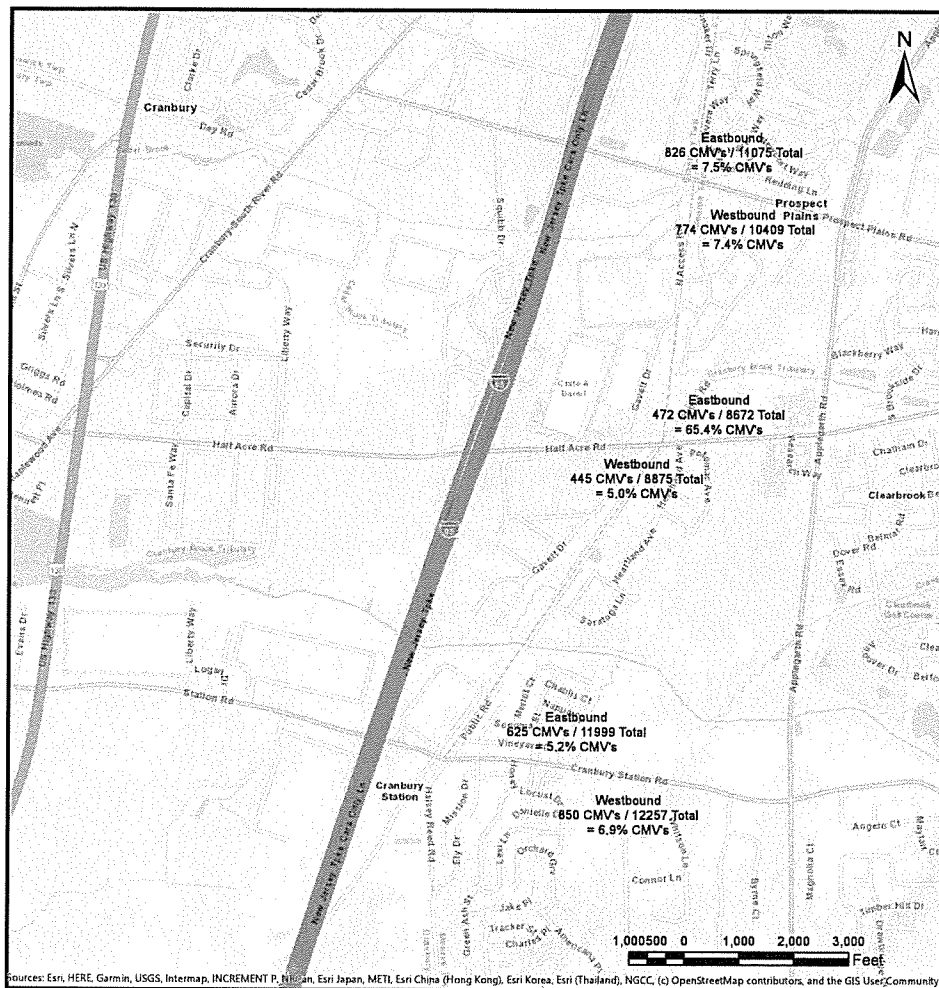
Please do not hesitate to contact the office, should you require anything further.

Sincerely,



Ernest W. Feist, PE, PP, CME
President



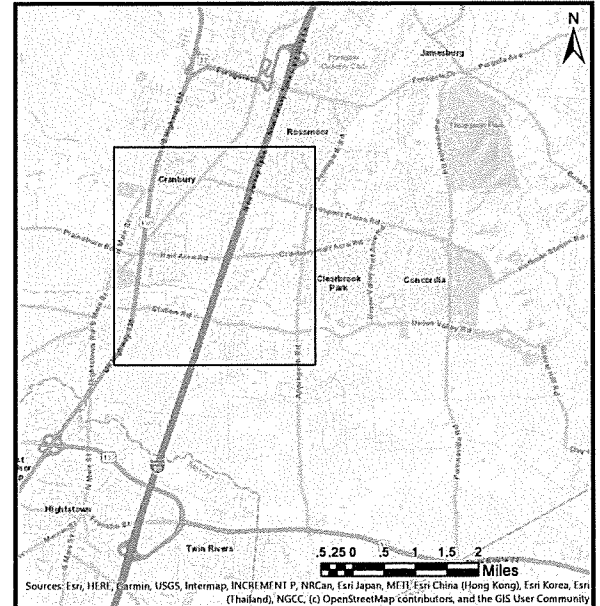
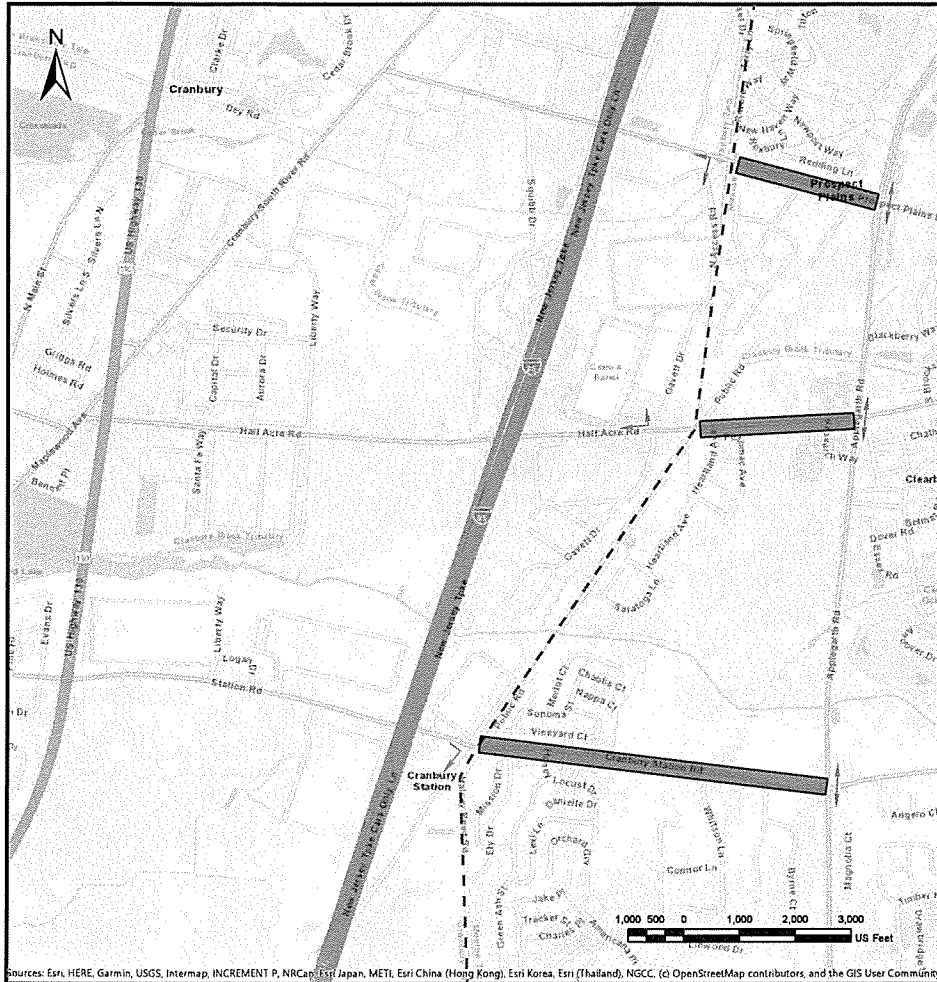


Applegarth Road Corridor, Monroe Township Middlesex County, NJ

Commercial Motor Vehicle Counts

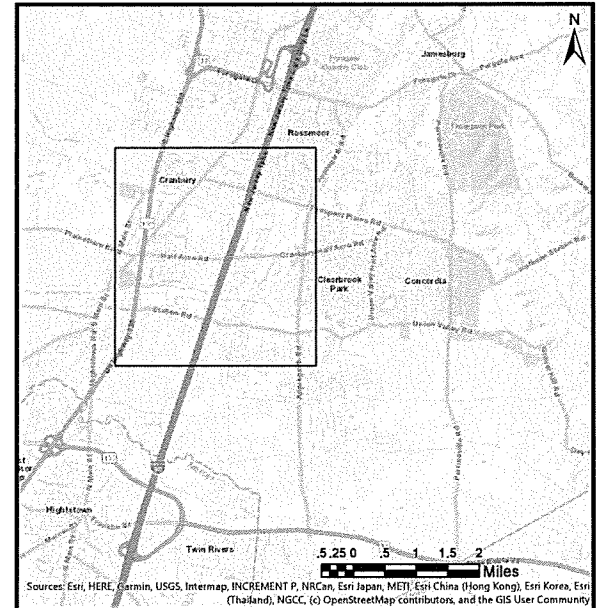
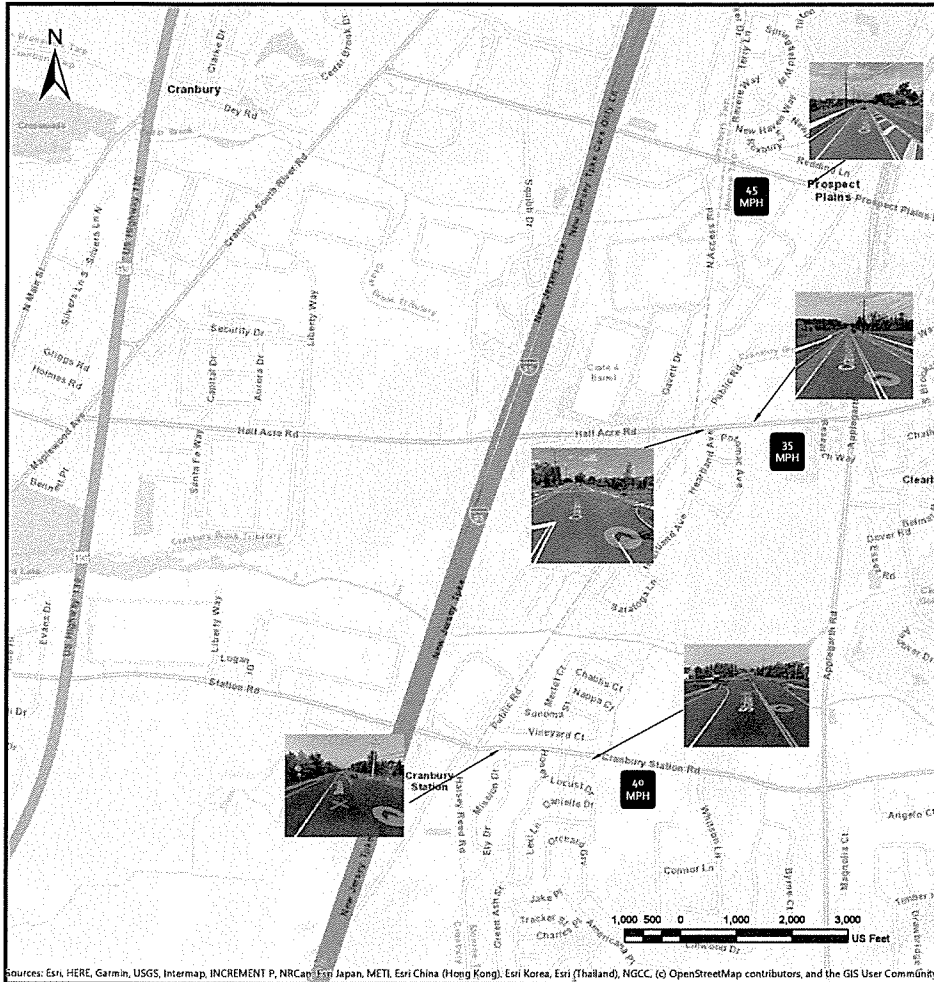
Counts are for a 48hr period taken between
6/3/19 and 6/29/19, weekdays only.

Prepared by: Ernest W. Feist, PE, PP, CME
 Center State Engineering
 481 Spotswood Englishtown Road
 Monroe Township, NJ 08831
 CSE Job# 19-007-08
 September 24th, 2019



Applegarth Road Corridor, Monroe Township Middlesex County, NJ Entrapment Analysis

Prepared by: Ernest W. Feist, PE, PP, CME
Center State Engineering
481 Spotswood Englishtown Road
Monroe Township, NJ 08831
CSE Job# 19-007-08
September 24th, 2019



Applegarth Road Corridor, Monroe Township Middlesex County, NJ Site Information, Speed Limits, Geometry

Prepared by: Ernest W. Feist, PE, PP, CME
Center State Engineering
481 Spotswood Englishtown Road
Monroe Township, NJ 08831
CSE Job# 19-007-08
September 24th, 2019